



ASCENT  
PACKAGING SYSTEMS



# CONTINUOUS BELT TYPE VACUUM PACKAGING MACHINE



## Product Details

The Continuous Belt Type Vacuum Packaging Machine is designed for high-efficiency, continuous vacuum sealing, suitable for various industries including food processing, electronics, and pharmaceuticals. This machine automates the entire packaging process, enhancing productivity and ensuring product freshness.

## SPECIFICATIONS

Voltage	AC 380/50 Hz
Motor Power	3000 W
Sealing Power	2000 W
Ultimate Vacuum Pressure	1.5 kpa
No. of Sealing Bars for Each Chamber	2Pcs
Chamber Dimension(L*W*H)	1170*460*100mm
Sealing Length	1100mm
Sealing Width	8mm
Vacuum Pump Rate	100m3/h
Material for Vacuum Chamber	Stainless Steel
External Dimension(L*W*H)	1950*1630*1300mm
Net Weight	460kgs
Max size of Packaging Bag	1100*240mm
Max size of Packed Goods	1100*190*82mm

### Working Process:

**Belt Transmission:** Products are placed on the conveyor belt, which transports them through the packaging system.

**Vacuumping:** The machine evacuates air from the packaging chamber to create a vacuum, preserving the product.

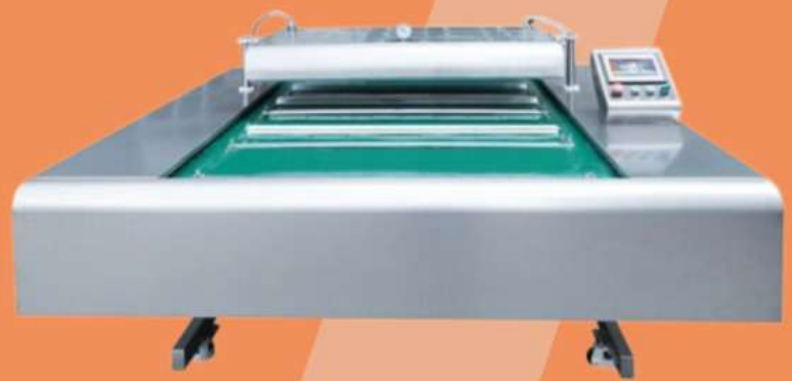
**Sealing** : After vacuuming, the machine seals the package to prevent air entry.

**Cooling** : Sealed packages are cooled to maintain product integrity.

**Lid Opening** : The system automatically opens the lid for the next cycle, readying the machine for new products.

Scan QR Code  
for More Details





## Key Features :

**High Precision:** Ensures accurate vacuuming and sealing for consistent packaging quality. Smooth

**Operation:** Features a conveyor belt with adjustable tilt angles and precise positioning for efficient product handling.

**User-Friendly Interface:** Equipped with a PLC control system and touch screen for easy operation and monitoring.

**Automatic Process:** Reduces manual intervention by automating the entire packaging sequence, from loading to unloading.

## Specifications :

**Application :** Suitable for packaging rare metals, precision instruments, electronic components, pharmaceuticals, and food items.

**Power Supply :** Electric

**Automation :** Semi-Automatic

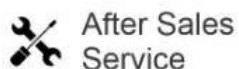
**Inflatable Device :** Not included

**Type :** Continuous Belt Type Vacuum Packaging Machine

**Object State :** Compatible with paste, powdery, liquid, and solid products.

**Condition :** New

**Material :** Constructed from stainless steel for durability and easy cleaning.



After Sales  
Service



World Class  
Certified Products



Value for Money



Ready Availability



Customised  
Solutions



Supportive Staff



Enquiry Now

**+91 77200 00665**